

PRO-GRIND

SHARPENING SYSTEM

Version 2.0

Safety First



Disconnect tool from power source before performing any adjustments.



Always wear proper ear protection when working with machinery.



Use caution when handling sharp objects (saw blades, router bits, turning tools and so on). Use protective gloves whenever possible.



Always wear proper eye protection when working with machinery and tools.

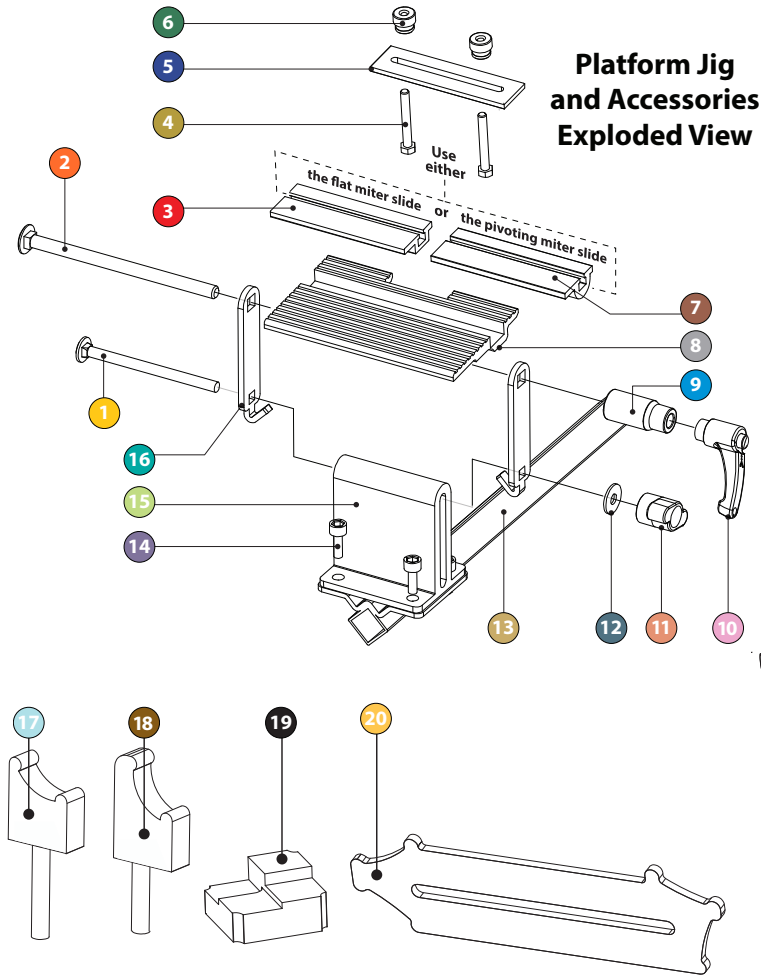


Always wear proper respiratory protection when working near airborne dust particles.

Please read and fully understand any and all safety materials that came with your power tools or machinery before operation. Always follow all safety guidelines set in place by the power tool or machine manufacturer.

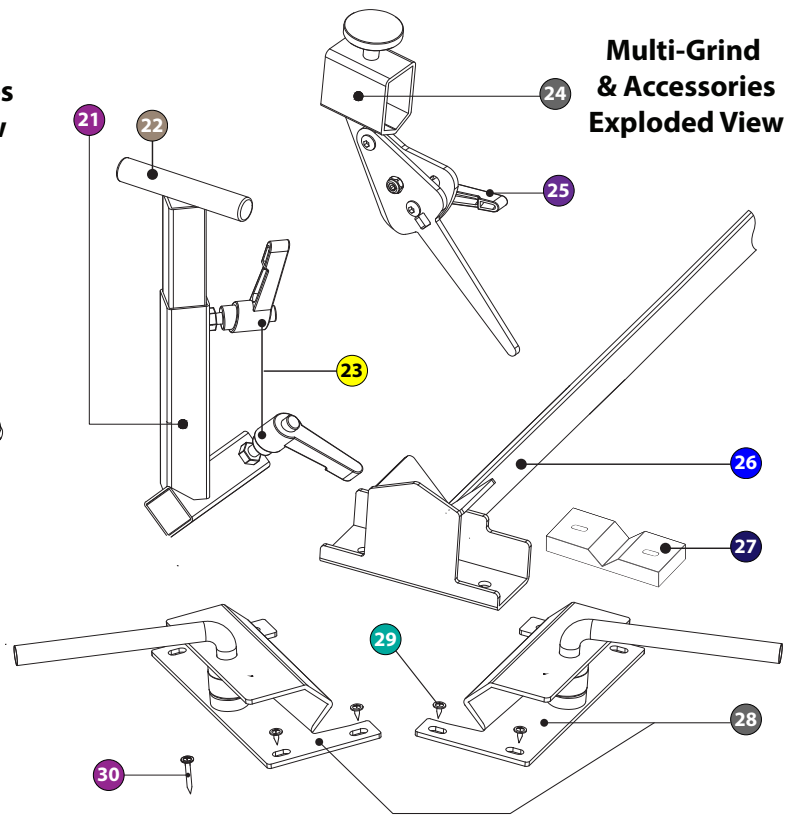


⚠ ATTENTION Assemble the Platform Jig first as shown in exploded view drawing below.



No.	Part Description	Qty.
1	Short Support Arm Bolt	1
2	Long Support Arm Bolt	1
3	Flat Miter Slide	1
4	Miter Slide Bolt	2
5	Hold Down Plate	1

No.	Part Description	Qty.
6	Knurled Knob	2
7	Pivoting Miter Slide	1
8	Platform	1
9	Bushing	1
10	Large Ratcheting Knob	1

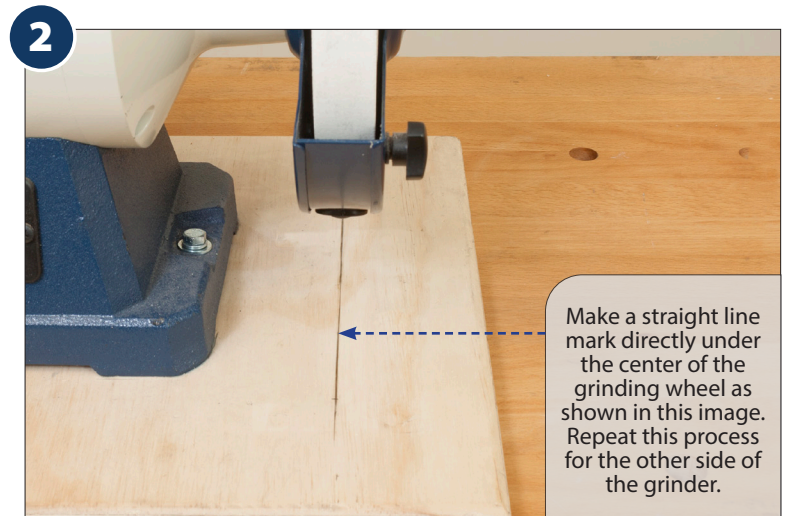


No.	Part Description	Qty.
11	T-style Knob	1
12	Washer	1
13	Support Arm	1
14	Base Hex Screw	4
15	Sharpening Jig Base	1
16	Vertical Support Arm	2
17	Setup block #2	1
18	Setup block #1	1
19	Magnetic Micro Bevel Block	1
20	Quad Angle Setting Gauge	1

No.	Part Description	Qty.
21	Tool Rest Mount	1
22	Tool Rest	1
23	Ratcheting Knob Male	2
24	Multi-Grind Jig	1
25	Locking Knob Female	1
26	Multi Ground Mounting Bar	1
27	Glide Blocks	4
28	Base	2
29	Short Base wood screws	8
30	Long Base wood screws	8

Grinder Preparation

For optimal performance, we recommend that your grinder and the Pro-Grind sharpening system be mounted on the same surface. Typically this is done by securing the grinder to a 3/4" piece of plywood that is slightly larger than the grinder. This ensures that the Pro-Grind system and the grinder will always be aligned.



Make a straight line mark directly under the center of the grinding wheel as shown in this image. Repeat this process for the other side of the grinder.

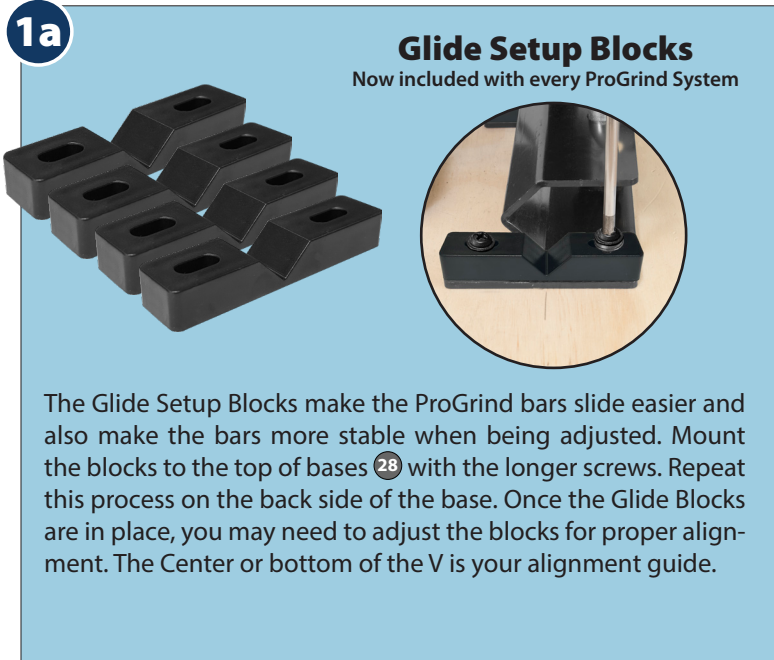
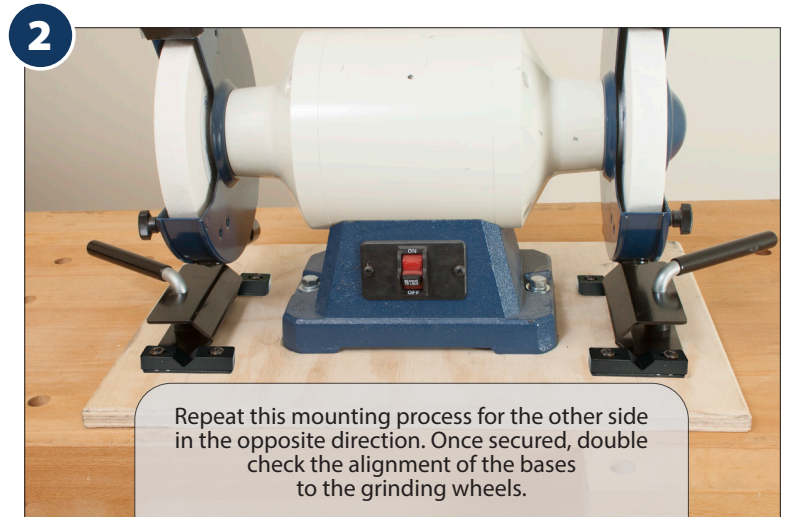
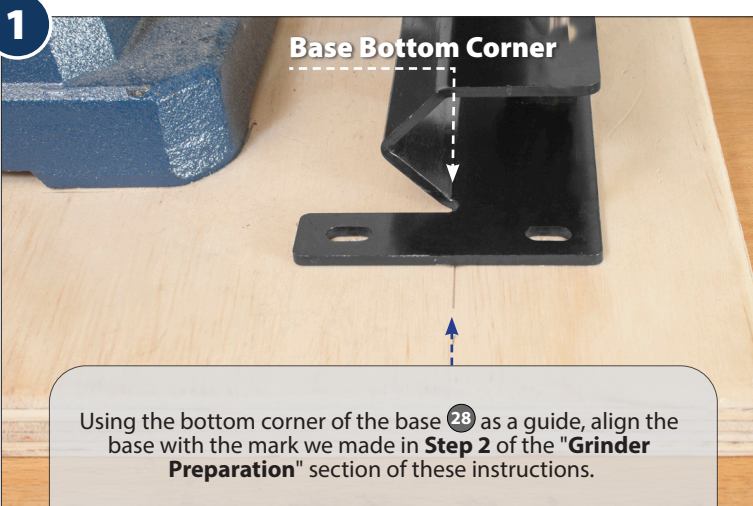
Secure the grinder to a piece of plywood. Leave room on the front side for the Pro-Grind system and square it to the plywood. In this example we used a 3/8" bolt with a t-nut, washer and lock washer on each side of the grinder.

Please Note that it may be necessary to add a "riser" block to gain clearance for your grinder wheels as shown in figure 1a.



Attach & Secure Pro-Grind Bases

When attaching and securing the two Pro-Grind bases **28** to the plywood base, be sure to keep the Pro-Grind bases running parallel to the grinding wheels. This is achieved by lining up the Pro-Grind bases with the lines marked in step 1.



3 Basic PRO-GRIND Sharpening Methods

Will be covered in these instructions

Platform Grind Method



Multi-Grind Method



Tool Rest/Pocket Grind Method





Platform Method

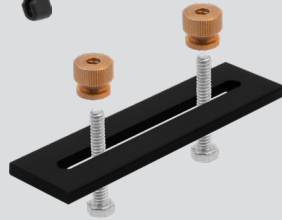
Using the platform gives you complete control over flat edge turning tools like skews, parting tools and scrapers. Your tool fits neatly into the tool holder and can then slide back and forth in through the platform slot. The Quad Angle Setting Gauge (included) gives you the perfect angle settings for the four various tools that can be sharpened using this method.

Accessories Used for this Method

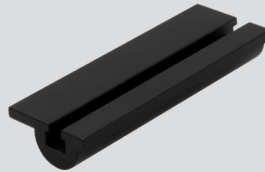
All are included



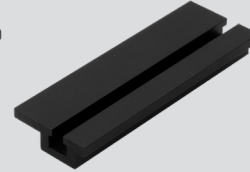
Platform Assembly



Miter Slide Hold Down Plate



Pivoting Miter Slide



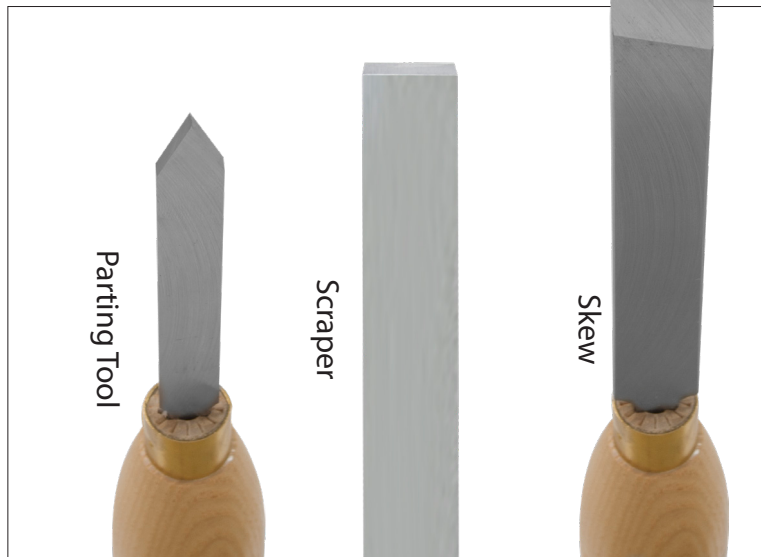
Flat Miter Slide



Quad Angle Setting Gauge

Platform Only

1 Choose your tool to sharpen



2

Set the correct platform angle and sharpen



With the Quad Angle Setting Gauge, set the angle of the platform by identifying your tool on the gauge. Place the gauge on the platform and adjust the platform until the two points on the gauge touch the wheel. Secure the platform and sharpen your tool using a side to side motion.

Platform with Tool Holder

1

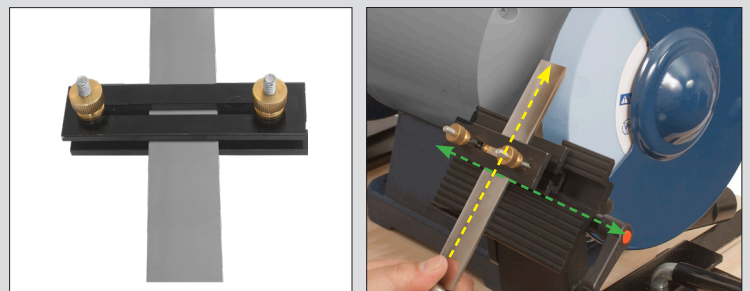
Set the correct platform angle



With the Quad Angle Setting Gauge, set the angle of the platform by identifying your tool on the gauge. Place the gauge on the platform and adjust the platform until the two points on the gauge touch the wheel. Secure the platform.

2

Use of the Miter Slide



Place your tool to be sharpened into the Miter Slide. Square the tool to the sliding assembly and secure the tool into the Tool Holder with the brass knobs. Place your tool with the Miter Slide into the platform slot. Slightly loosen the brass knobs on the Miter Slide and slide your tool up toward the grinding wheel until it touches the wheel and secure the tool holder with the brass knobs. Make any necessary adjustments to the platform and secure the platform. Turn the grinder on and slide the tool side to side across the grinding wheel.

Flat Miter Slide Use



Basic Adjustments

The sharpening jig comes with a unique Flat Miter Slide assembly that gives you the ability to slide your tool side to side while sharpening. Doing this helps produce a clean, smooth, even edge regardless of what type of tool you need to sharpen. Place your tool into the slider assembly and adjust the tool either forward or backward (B) inside of the slider assembly depending on the tool length, square the tool (A) to the slider assembly and secure. Place your tool and the slot slide assembly into the slot on the jig platform, adjust the jig to the correct distance and angle and start sharpening your tool by sliding the tool and the Flat Miter Slide assembly side to side until you achieve the desired results.

Pivoting Miter Slide Use



Basic Adjustments

Also included is the unique Pivoting Miter Slide assembly that gives you the ability to ease your tools into the grinding wheel. The Pivoting Miter Slide also slides side to side to help produce a clean, smooth, even edge regardless of what type of tool you need to sharpen. Place your tool into the slider assembly and adjust the tool either forward or backward (B) inside of the slider assembly depending on the tool length, square the tool (A) to the slider assembly and secure. Place your tool and the slot slide assembly into the slot on the jig platform, adjust the jig to the correct distance and angle and slowly pivot the Miter Slide into the wheel and start sharpening your tool by sliding the tool and the pivoting the Miter Slide assembly side to side until you achieve the desired results.



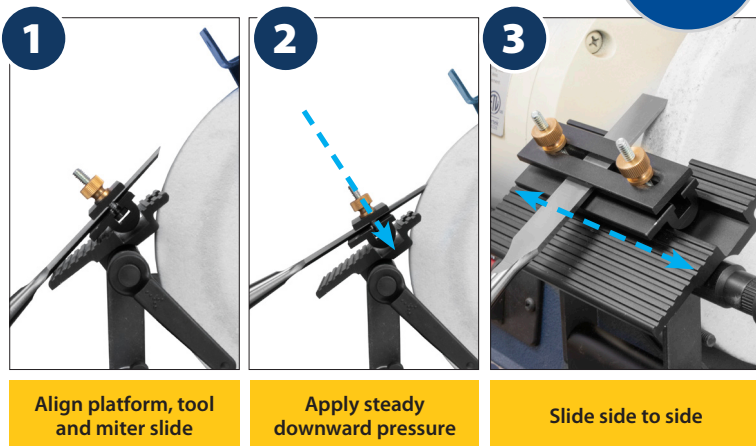
Flat Miter Slide

ProGrind Tip...

Pivoting Miter Slide



With the platform properly setup an aligned, start sliding the flat miter slide side to side to sharpen your tool. The miter slide assembly can be periodically lifted out to check on the edge sharpness. Once you have checked the edge, you can make any needed adjustments and continue sharpening your tool.



With the platform properly setup an aligned, apply steady downward pressure on the pivoting miter slide to sharpen your tool. This prevents the pivoting slide from lifting out of the miter slot. Not enough pressure can cause your tool and the slide to "pop" out of place.

Small Object Sharpening



Sometimes you may need to sharpen or grind a small piece of material. Using the platform works very well for this, but the notched side may not be the best solution since the open miter slot won't give your small items the support they need. The ProGrind Sharpening Platform can be reversed so that the flat side will be the side closest to the wheel which will produce a full flat surface to sharpen or grind small parts or material.

Accessories Used for this Method

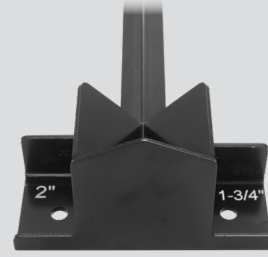
All are included



Multi-Grind Jig



Magnetic Micro Bevel Setup Block



Multi-Grind Bar

Multi-Grind Method Setup Guide

Before starting on the Multi-Grind method, it is a good idea to know the 4 basic grind types used in this method. The following grinds are useful for different turning applications. The following describes three common grinds for bowls, plates and platters and one for spindle work such as finials, pepper mills turned lidded boxes and many other spindle projects. Each of these grinds is achieved using the guidelines scribed on the sides of your setup blocks.

Setup Block #1

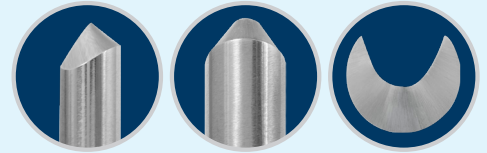


Bowl Gouge

Leg Angle: 1st position down or at 23 degrees with 2" projection
The Standard Grind can be used basically everywhere, however it is best suited for dry wood and twice turned bowl blanks when dry.

The standard grind is used by most tool manufacturers for bowl gouges regardless of diameter of the tool. This is a general use type of grind that is best used on dry wood for both inside and outside of bowls, plates and platters. This grind is easy to use for most skill levels.

Standard Grind



Setup Block #2



Bowl Gouge

Leg Angle: 3rd position down or at 45 degrees with 2" projection
Ellsworth type (long swept back wings) edges are great for turning green wood and shear scraping.

This is generally the most useful all around bowl gouge grind and is the preferred grind for green wood. It is also suitable for dry wood. Very large cuts in green wood are a breeze with this grind. Excellent for shear scraping both inside and outside of bowls, plates and platters. This type of grind is similar to the Ellsworth and the Irish or Celtic grind.

Long Grind



Setup Block #2

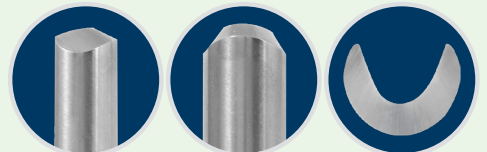


Bowl Gouge

Leg Angle: 2nd position down or at 40 degrees with 2" projection
Bottom feeder type edge (very short and steep) that is ideal for cleaning up the deep inside of bowl bottoms. Presented at almost 90 degrees to the bottom.

The short grind is a special type of grind that is useful for finishing the bottom of bowls with tall sides, such as calabash or semi-hollow forms. This type of grind is best used with narrow openings which prevent using long grinds or standard grinds on the very bottom of the inside. It is also known as a "Bottom Feed Grind" by many in the woodturning world.

Short Grind



Setup Block #1



Spindle Gouge

Leg Angle : 1st position down or at 23 degrees with 2" projection
A spindle gouge (denoted by it's much shallower flute) with a fingernail grind enables a turner to turn beads and coves with much steeper sides and more pronounced angles. between elements in spindle work.

A spindle gouge (denoted by it's much shallower flute) with a fingernail grind enables a turner to turn beads and coves with much steeper sides and more pronounced angles between elements in spindle work. One must maintain a rounded tip while pulling the wings back. This configuration avoids catching the edge of the wings when rolling a bead or scooping out a cove.

Fingernail Grind





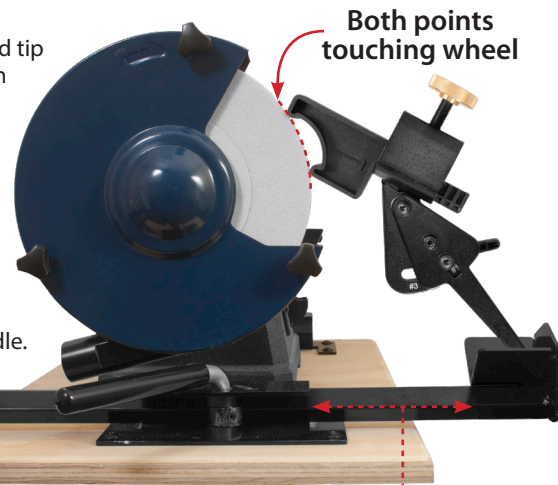
Multi-Grind Method

The Multi-Grind method helps you achieve a sharp keen edge on rounded edge tools like gouges. The rolling motion along with the ProGrind setup process gives you the ability to sharpen your gouges with ease and total accuracy without doing any math. We have done all the "legwork" for you, now it's time to sharpen those tools.

4

Adjust the Multi-Grind Mounting Bar

Rest the Multi-Grind tip into the pocket arm assembly. Adjust the Multi-Grind Mounting Bar until both points of the setup block touch the wheel at the same time as shown. Secure the Mounting Bar with cam lock handle.

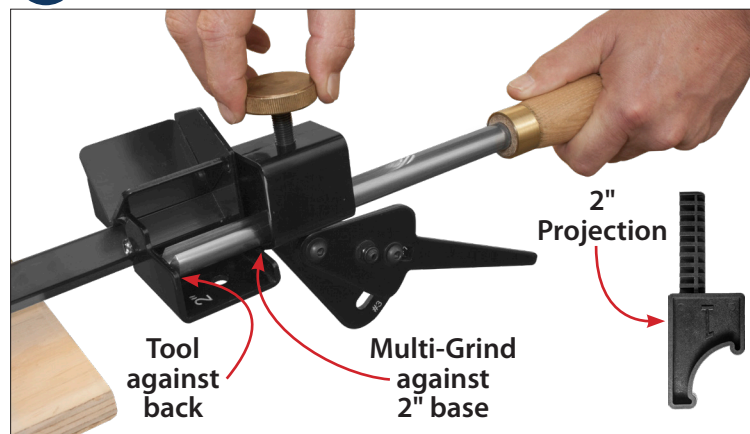


Both points touching wheel

Adjust in or out until both points on setup block touch the wheel

5

Set Freehand Guide for Tool 2" Projection



Tool against back

Multi-Grind against 2" base

2" Projection

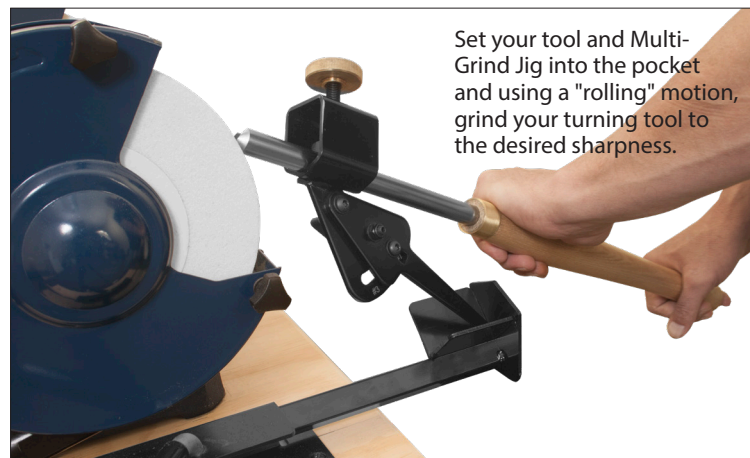
Remove the setup block from the Multi-Grind Jig and insert your tool in its place. Butt the Multi-Grind Jig up against the end of the Multi-Grind Bar on the 2" side. To set the correct "projection" of your tool with the Multi-Grind Jig we will use the end of the Multi-Grind Mounting Bar which has a built-in gauge for this purpose. We are using the 2" side in reference to the setup block. With the Multi-Grind Jig firmly up against the end of the Multi-Grind Mounting Bar, slide your tool through until it touches the back. Secure tool with brass knob.

Shop Note:

Typically, the 2" projection is the most commonly used projection depth. 1-3/4" can be used to create a more "blunt" tool edge depending on your preference.

6

Start to sharpen



Set your tool and Multi-Grind Jig into the pocket and using a "rolling" motion, grind your turning tool to the desired sharpness.

1

Choose your tool to sharpen



Bowl Gouge

Spindle Gouge

2

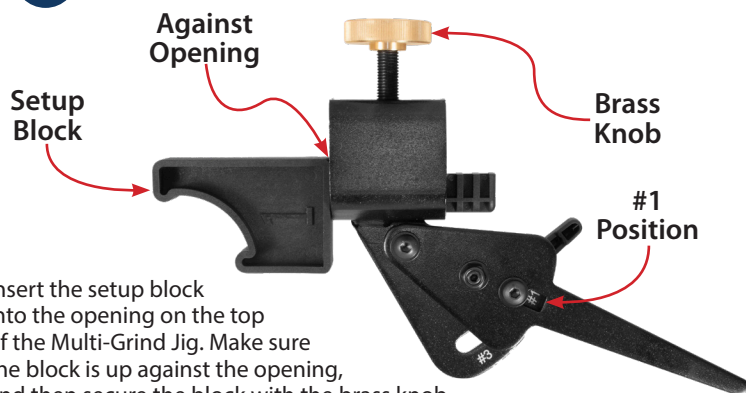
Select the corresponding setup block

When selecting the proper setup block, you need to base your choice off of the tool you are sharpening and the grind type that is shown in the "Multi-Grind Method Setup Guide" section of these instructions. In this example we are going to sharpen a bowl gouge with a Standard Grind. This means we will select the setup block marked #1.



3

Insert Setup Block into Multi-Grind Jig



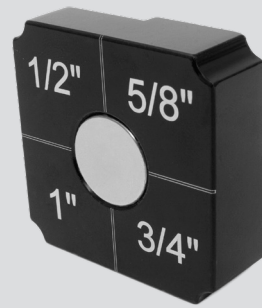
Insert the setup block into the opening on the top of the Multi-Grind Jig. Make sure the block is up against the opening, and then secure the block with the brass knob.

Adjust the arm to position #1 as shown in the image above. Secure the position with the locking knob 25.



Microbevel Edge (Use of Microbevel is optional)

Many woodturners like to grind off the heel on bowl gouges to achieve cleaner cuts. This is especially true when turning the interior of bowls. The Magnetic Microbevel Setup Block offers 4 different settings to suit your needs. An embedded magnet keeps the block in place while in use.



Microbevel front

Microbevel back



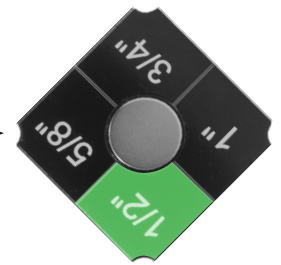
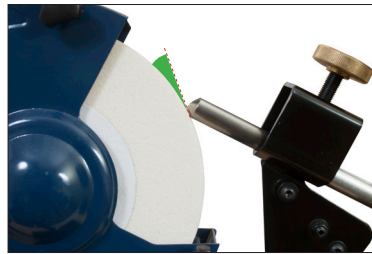
Microbevel Edge



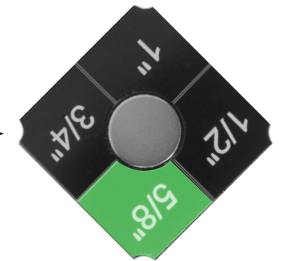
Once your gouge is sharpened to your liking, remove the Multi-Grind Jig and your tool from the Multi-Grind Mounting Bar. Place the Magnetic Microbevel Setup Block into the Multi-Grind Mounting Bar pocket with the desired grind depth to the bottom. In this example we are using a 1/2" depth setting as shown. Place the Multi-Grind Jig back into the Multi-Grind Mounting Bar pocket with the tip against the bottom of the setup block. Grind your tool in the same fashion as in step 6.

Below are the different Microbevel Setup Block settings and approximate angles. Green highlight signifies setting position in the pocket.

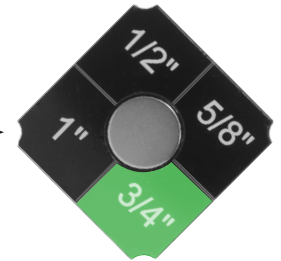
1/2" Setting



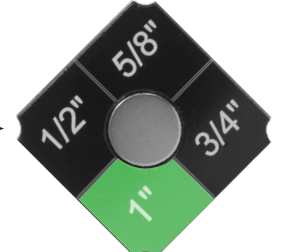
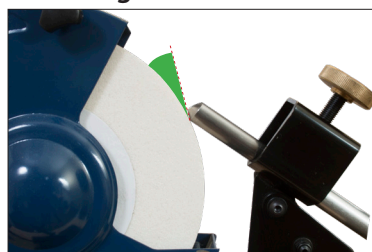
5/8" Setting



3/4" Setting



1" Setting





Tool Rest/Pocket Grind Method

Using the Tool Rest offers you the best possible way to achieve a precise edge to your bevels without taking off too much material on your tool. After all, we need our tools to last a long time, so why would you want to take off too much at a time? The tool rest fixes this issue with a few simple steps. This method is primarily designed to be used with a Spindle Roughing Gouge.

Accessories Used for this Method

All are included



Tool Rest



Multi-Grind Bar

1

Choose your tool to sharpen

Please Note:
The Tool Rest method is primarily designed to be used with a Spindle Roughing Gouge tool. This tool has an even bevel edge which makes it perfect for this type of sharpening process.



2

Attach the Tool Rest Assembly

Remove the Multi-Grind Bar from the base. Slide the Tool Rest assembly onto the Multi-Grind Bar.



3

Adjust the Tool Rest and Multi-Grind Bar

Slide the Multi-Grind Bar and Tool Rest back into the base. Set your tool into the pocket and adjust the Multi-Grind Bar so your tool sits at the correct angle. Lock the Multi-Grind Bar in place. Slide the Tool Rest towards the grinder so that it sits approximately 2" from the grinding wheel and secure.



4

Raise the Tool Rest

Take a dollar bill and place it on the tool rest. Raise the tool rest and dollar bill up until it touches your tool. Secure the tool rest. Remove the dollar bill. Sharpen your tool. Continue sharpening your tool until no more material is being removed. Once you notice that no more material is being removed, you are finished sharpening your tool. If you want to take off a little more material, you can fold the dollar bill in half and repeat this step to take off twice as much material if so desired.



Shop Note:

The dollar bill is approximately .004" in thickness. This provides a perfect offset in thickness for material removal. The tool rest provides the perfect stopping point so you don't "over sharpen" or remove too much material.



*Check out
the instructional video
online...*



**Scan this
code**

or type this address into your web browser
<https://youtu.be/GgndljolgNg>



More sharpening supplies
online at our...
amazon
store



**Scan code
for more
Sharpening
items**

ProGrind Notebook

Standard Bowl Gouge Sharpening Notes

Short Grind Sharpening Notes

Long Grind Sharpening Notes

Fingernail Sharpening Notes

PRO-GRIND

SHARPENING SYSTEM

*Missing
Parts?*

Questions?

Thank you for choosing the ProGrind Sharpening System. We highly value our customers and we always do our best and strive to make sure that you are satisfied with your buying experience with us.

We have put a great deal of effort into packing and shipping high quality tools and accessories and hope that the products you purchase from us either meet or exceeds your expectations.

If for some reason you have any issues or are in need of parts from your order, please don't hesitate to contact us at 1-888-512-9069. We will do our absolute best to make it right.